

Dukes Vet Practice

Dykehead
Aboyne
Aberdeenshire
AB34 5JH
www.dukesvets.com



Farm Newsletter January 2011

Practice Survey

Thank you to everyone who took part in our client survey. We have received some very useful feedback which we greatly appreciate. We have listened to your comments and will do our best to continue to improve and expand the service we offer. A summary of the survey and comments is available on our website. If you have not already completed the survey you can still send it in as we are interested in all your comments.

The majority of responses were extremely positive. 98 % of respondents said they are happy or very happy with the service we provide and the same percentage would definitely recommend our practice to prospective new clients, and many have already done so. Thank you all for your support.

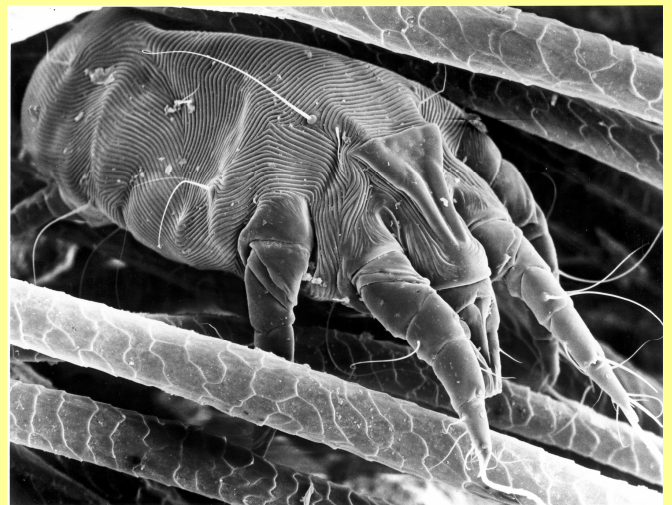
Congratulations to Susan Deans, the winner of the draw for a £30 gift voucher.

BVD update

The subsidised testing for BVD ends in March. Although the payment is relatively small it's perhaps better than nothing.

From September this year BVD testing will be compulsory for all cattle herds so not addressing the issue now is only delaying the inevitable. We would advise all cattle (Cont over)

Sheep scab order comes in to force



Psoroptes ovis – electron micrograph image of the mite that causes sheep scab

Since the cessation of compulsory dipping in 1992, sheep scab has been a persistent problem in some parts of Scotland. The new *Sheep scab (Scotland) order 2010* came in to force on 17th December 2010. Until now it has been very difficult to persuade certain farmers to act when sheep scab is suspected in their flocks. DEFRA now has new powers to impose movement restrictions; insist on inspection and treatment in flocks in Scotland and where scab is suspected.

If you suspect sheep scab in your flock you must treat the sheep. If you need help and advice contact one of the vets at the practice.

Symptoms of sheep scab can appear very mild at first. Initially the sheep may nibble or scratch at their fleeces and dirty areas on the fleece may appear. Extensive wool loss is only (Cont over)

☎ 013398 87010
Fax 013398 85554
Email jim@dukesvets.com; linda@dukesvets.com

Dukes Veterinary Practice Limited
Registered in Scotland No. 230567
Director Jim Dukes BVM&S, MRCVS

BVD (Cont)

owners to get ahead of the game and start testing now.

The initial screening test comprises five animals from each separately managed group of animals in the herd between 9 and 18 months of age, and ideally a minimum of 10 animals. If you do not have animals in this age range then you can discuss what you need to do with one of the vets.

There has been a certain amount of scaremongering about BVD but this does not seem to be backed up in discussions we have had with other practices. Unfortunately one vaccine now withdrawn from the market was associated with "Bleeding calf syndrome". We have never seen the disease in this practice and we haven't observed any negative effects from vaccination.

We have more information on our website or ring one of the vets or come in for a chat to discuss the best way to approach this.

Sheep EID headache ahead?



Changes to the recording rules for electronic tagged sheep came in to force on 1st January this year.

In many cases this should not create too many problems as for movements within a business the rules have not changed and sheep moving through a "*critical control point (CCP)*" do not need to be individually identified on farm. Most marts and slaughterhouses are registered as CCPs.

However if you buy hoggs privately or older EID tagged sheep in future these will have to be individually recorded on the movement document. For store lamb private sales only the flock number and number of sheep with each flock number have to be identified. NFU members can get full details through NFUS.org.uk but its hard to find up to date information on the SEERAD website.

Sheep scab (cont)

seen in advanced stages of the disease along with extreme loss of condition and mortality in some cases.

There are a number of different treatments available for treating sheep including dipping and injecting with various avermectin drugs. The treatment regimes and effectiveness vary with the product used so you need to select the best method for your farm situation.

Online payment facility

After a considerable delay this month we should have a facility for you to pay your accounts online via the website. We also have started a practice shop for wormers, first aid equipment and other essentials. There is a good selection of foaling, lambing and calving kit.

We have revised all prices for 2011 which will result in an overall increase broadly inline with the retail price index.

Practical sheep care course



We had a request in the questionnaire to run a practical sheep course.

If there is sufficient interest we will run a course here in March. The course will be limited to 12 people and cover most aspects of sheep care. The emphasis will be on practical handling and cover the basics of feeding, flock management, lambing etc. It will be aimed at the hobby farmer and smaller commercial flock.

If this sounds like the perfect course for you then please contact us and we will put a program together and organise a date. Also if there are any other topics you would like a meeting organised on please let us know.